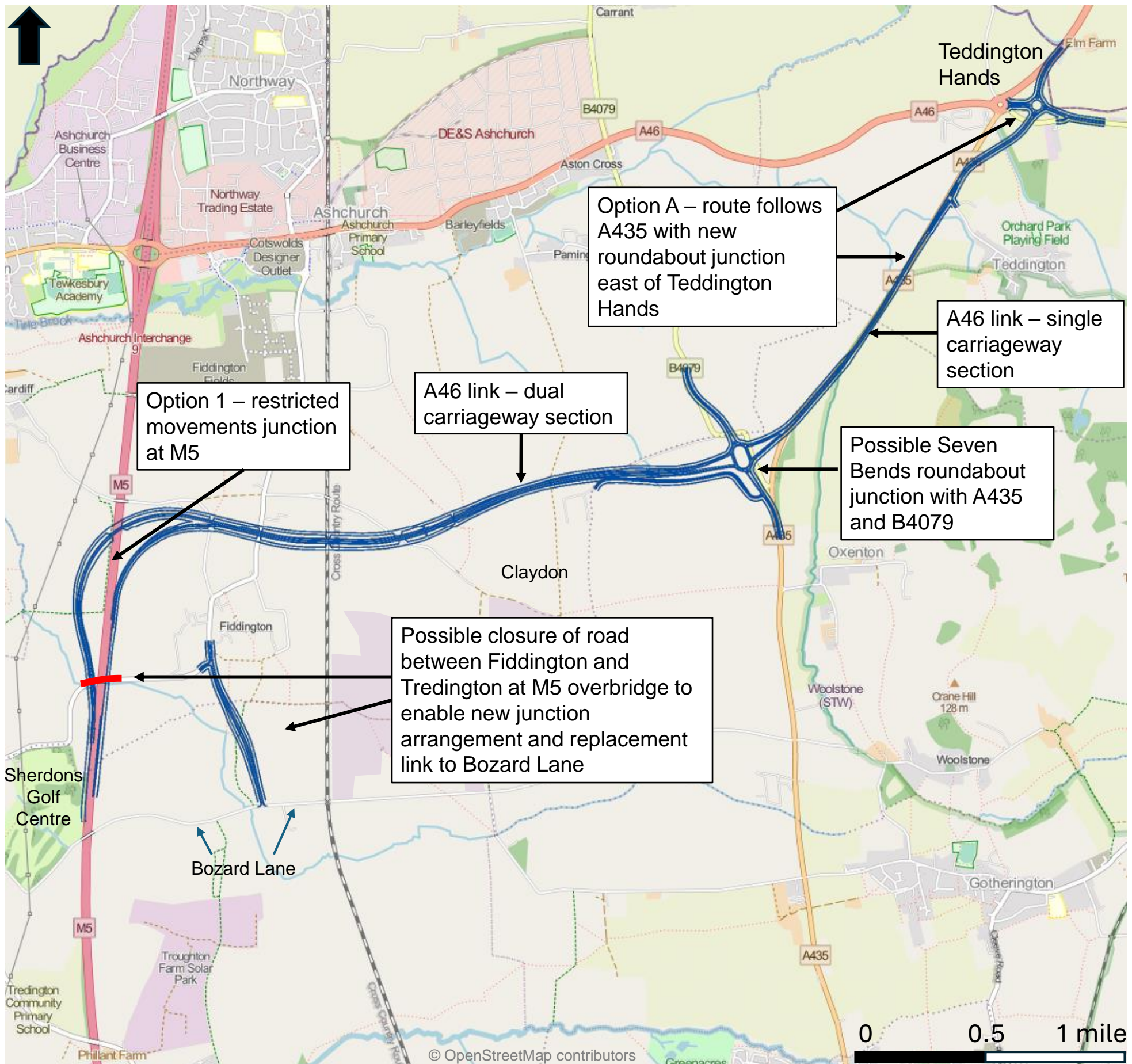


M5 Junction 9 and A46 (Ashchurch) Transport Scheme For public engagement (7 October – 2 December 2024)

Option 1A - Overview

This map illustrates the potential route of Option 1 combined with Option A including possible junction arrangements and local road diversions.

Each option presented is at an early stage of development and will be developed further taking into account stakeholder feedback and further technical work.

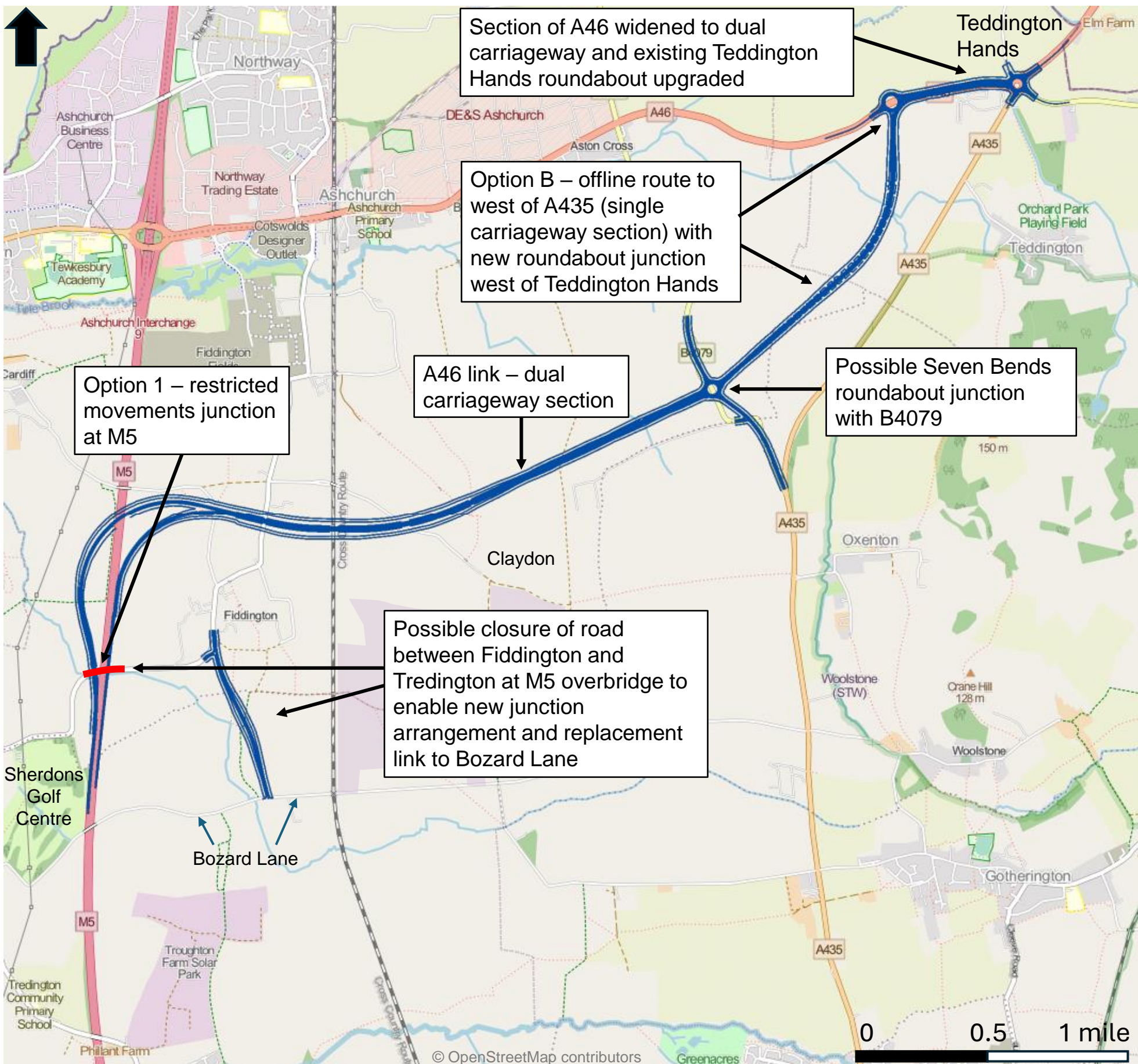


M5 Junction 9 and A46 (Ashchurch) Transport Scheme For public engagement (7 October – 2 December 2024)

Option 1B - Overview

This map illustrates the potential route of Option 1 combined with Option B including possible junction arrangements and local road diversions.

Each option presented is at an early stage of development and will be developed further taking into account stakeholder feedback and further technical work.

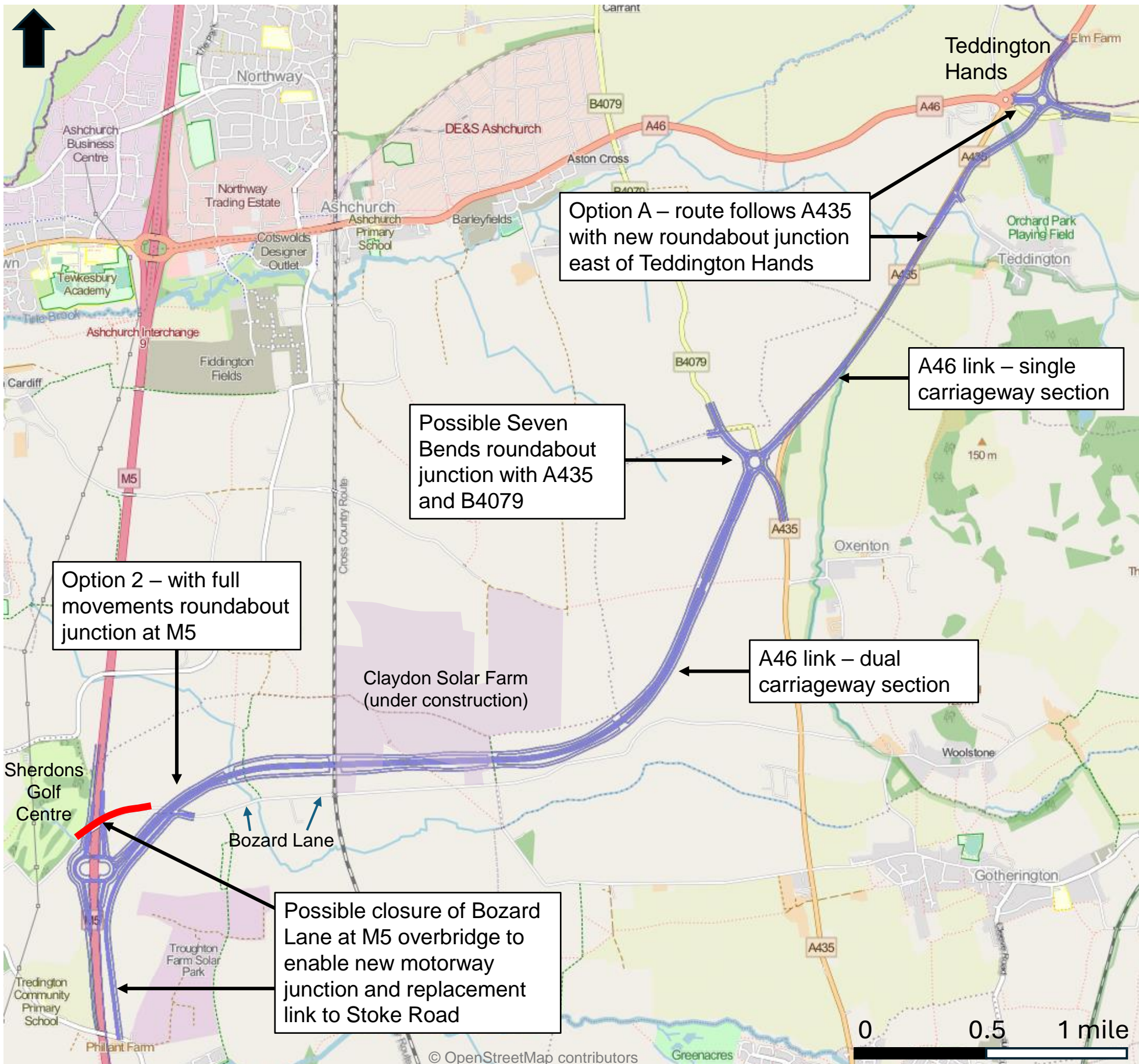


M5 Junction 9 and A46 (Ashchurch) Transport Scheme For public engagement (7 October – 2 December 2024)

Option 2A - Overview

This map illustrates the potential route of Option 2 combined with Option A including possible junction arrangements and local road diversions.

Each option presented is at an early stage of development and will be developed further taking into account stakeholder feedback and further technical work.

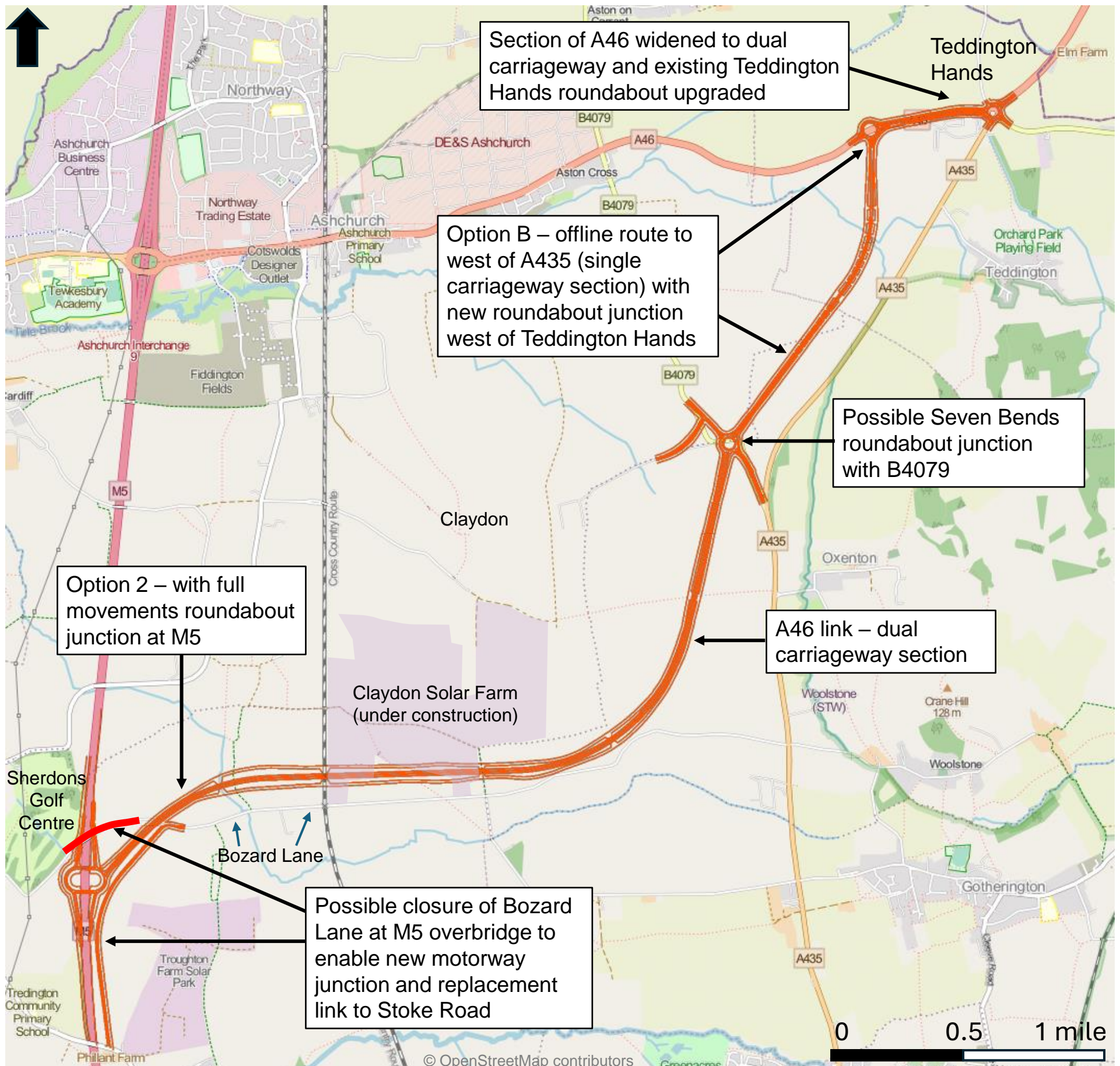


M5 Junction 9 and A46 (Ashchurch) Transport Scheme For public engagement (7 October – 2 December 2024)

Option 2B - Overview

This map illustrates the potential route of Option 2 combined with Option B including possible junction arrangements and local road diversions.

Each option presented is at an early stage of development and will be developed further taking into account stakeholder feedback and further technical work.

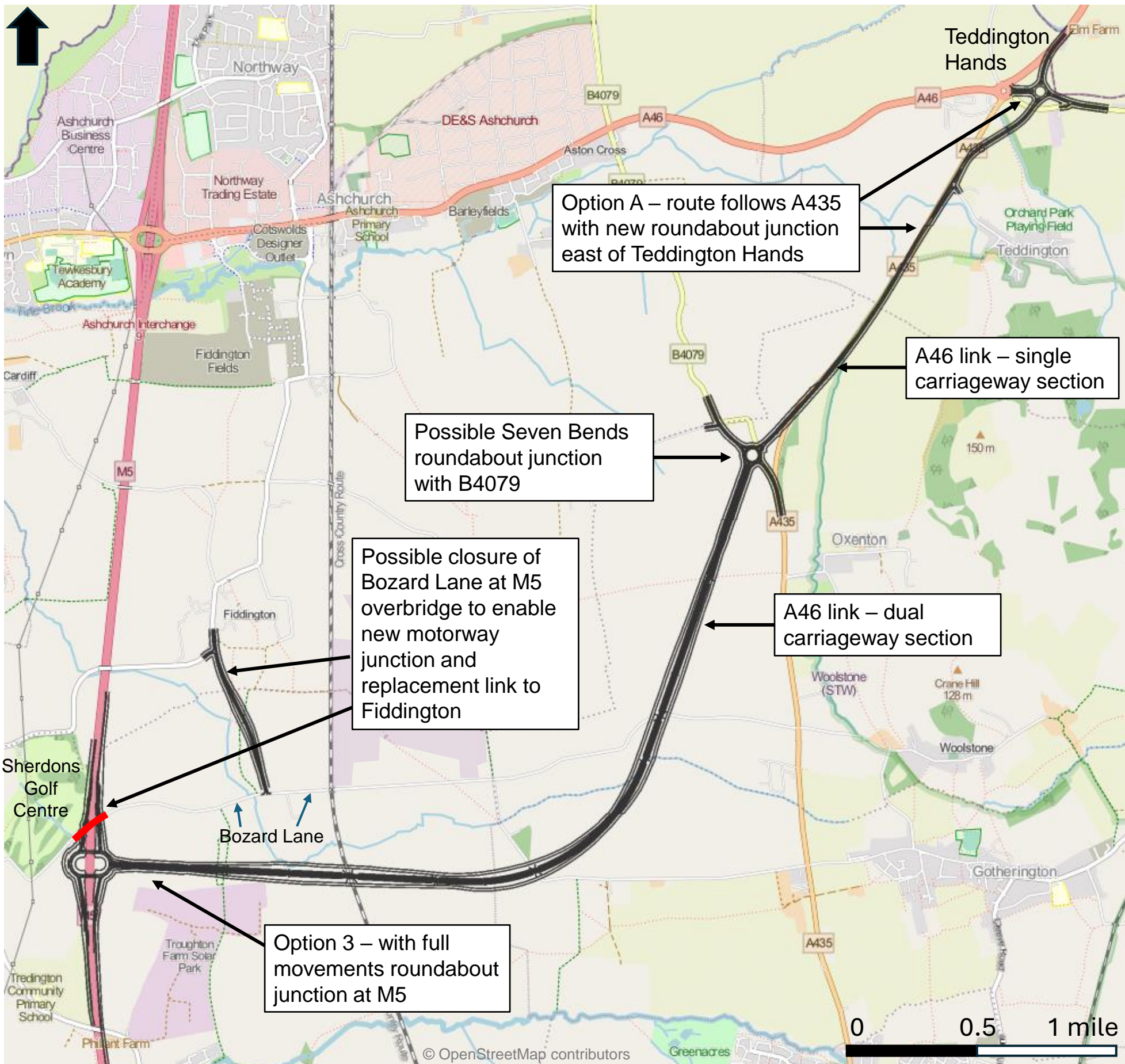


M5 Junction 9 and A46 (Ashchurch) Transport Scheme For public engagement (7 October – 2 December 2024)

Option 3A - Overview

This map illustrates the potential route of Option 3 combined with Option A including possible junction arrangements and local road diversions.

Each option presented is at an early stage of development and will be developed further taking into account stakeholder feedback and further technical work.



M5 Junction 9 and A46 (Ashchurch) Transport Scheme For public engagement (7 October – 2 December 2024)

Option 3B - Overview

This map illustrates the potential route of Option 3 combined with Option B including possible junction arrangements and local road diversions.

Each option presented is at an early stage of development and will be developed further taking into account stakeholder feedback and further technical work.

